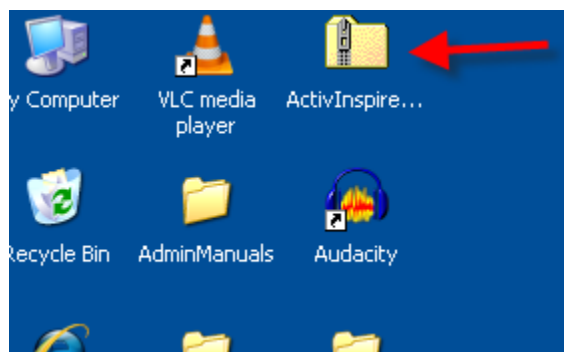


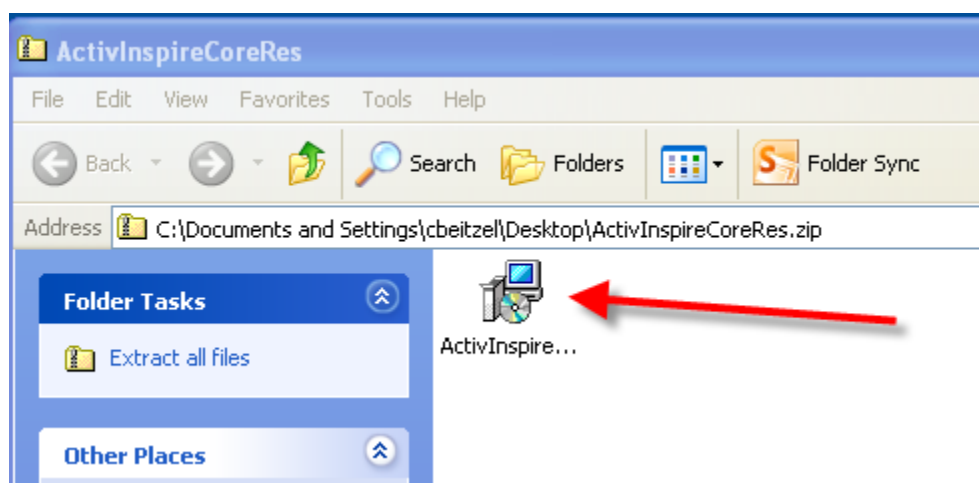
INSTALLING RESOURCE PACK

Click open the link in the email and save it to your desktop.

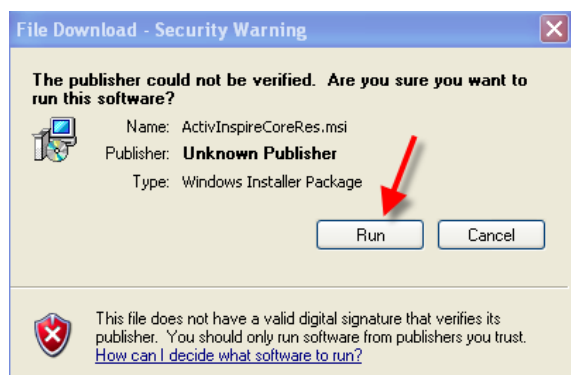
Click open the folder.



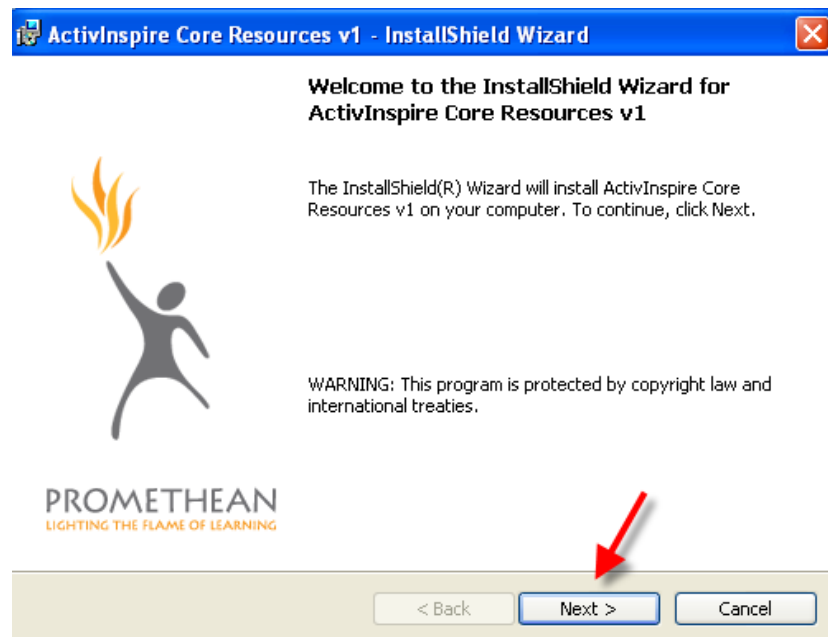
Double click on ActivInspire.



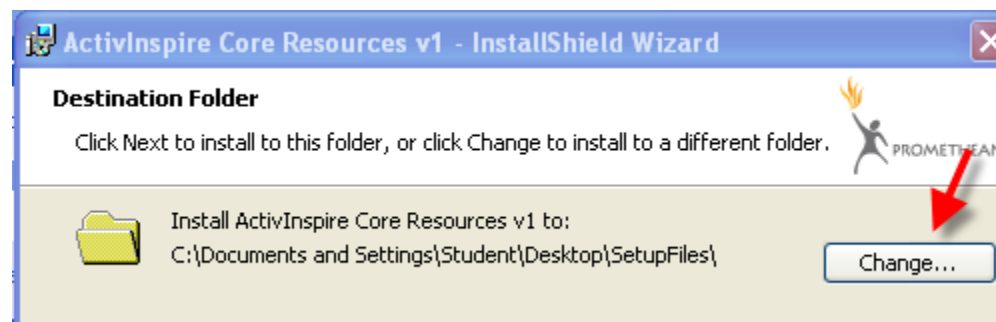
Click Run.



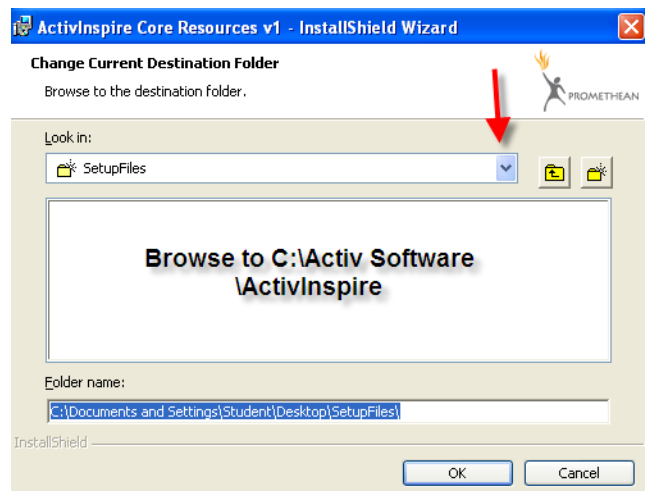
Click Next.



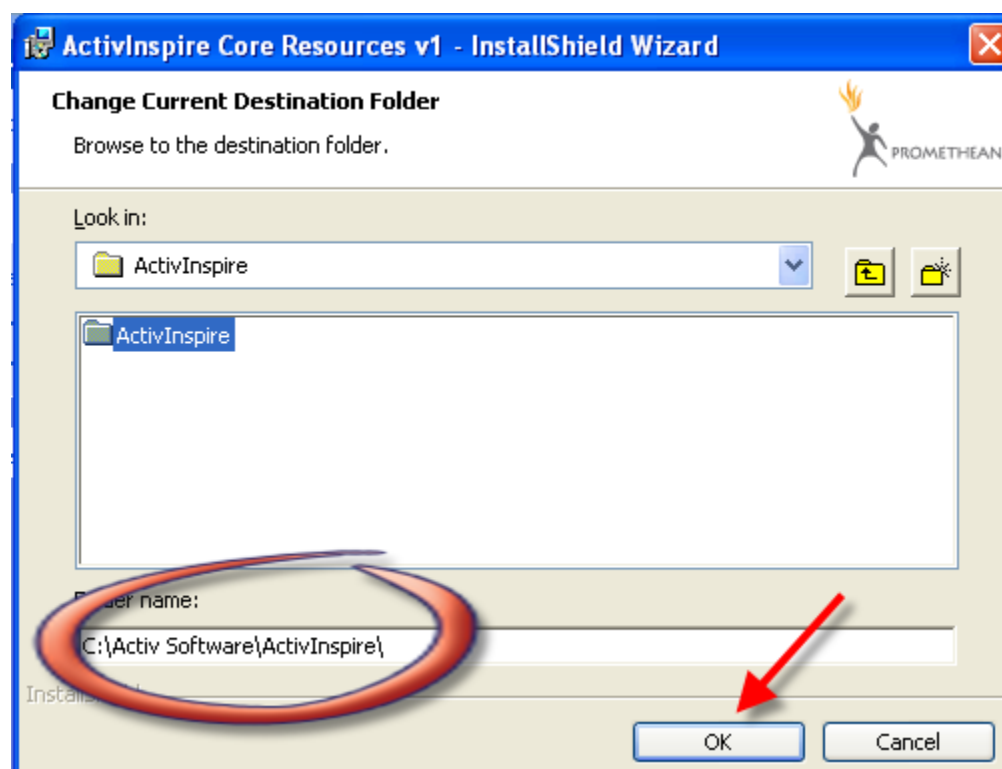
Click Change.



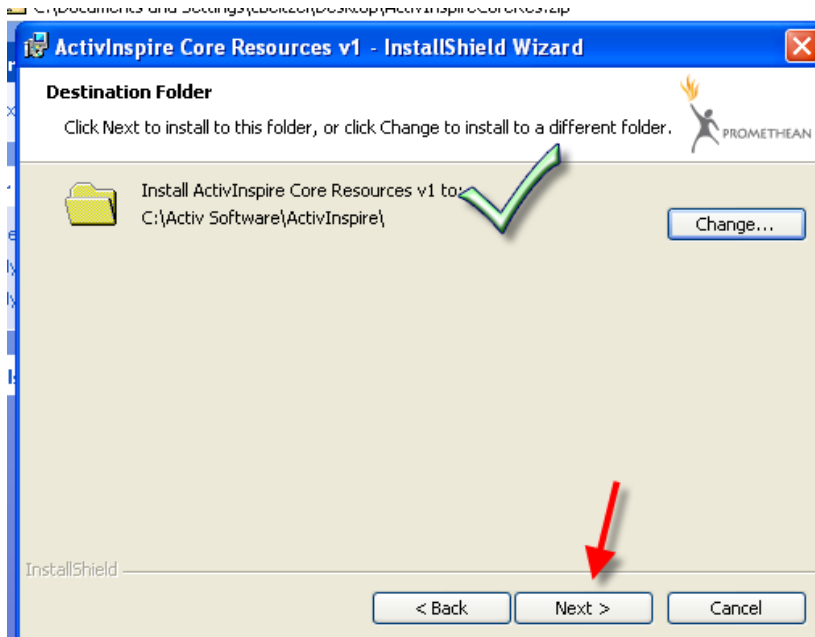
Browse to C:\Activ Software\ActivInspire folder



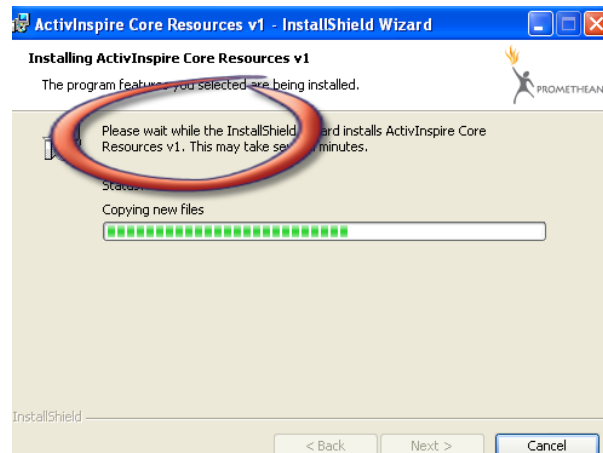
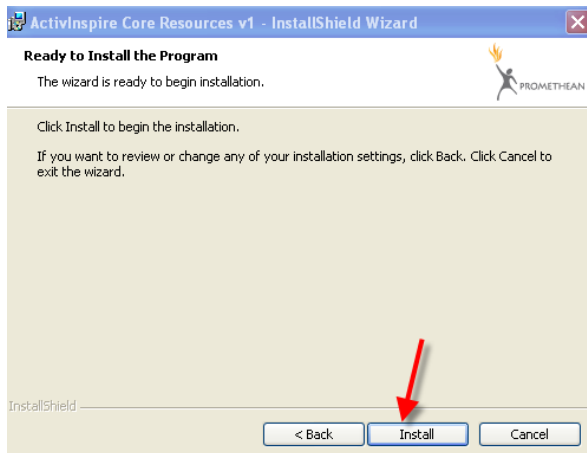
Click OK.



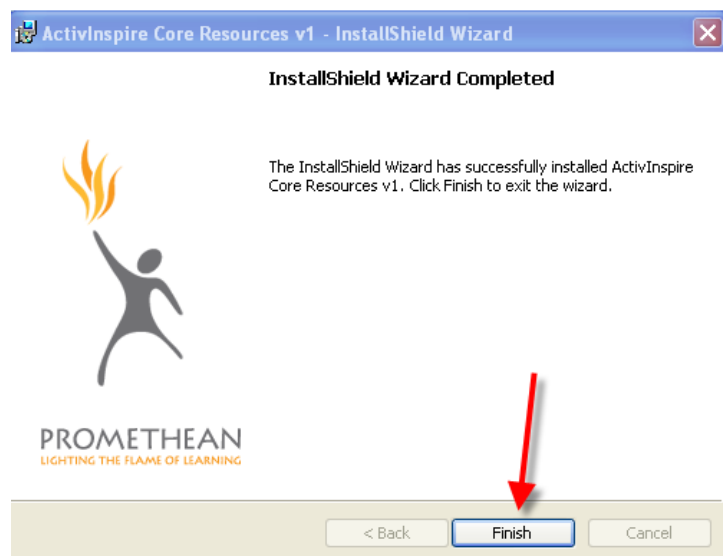
Click Next.



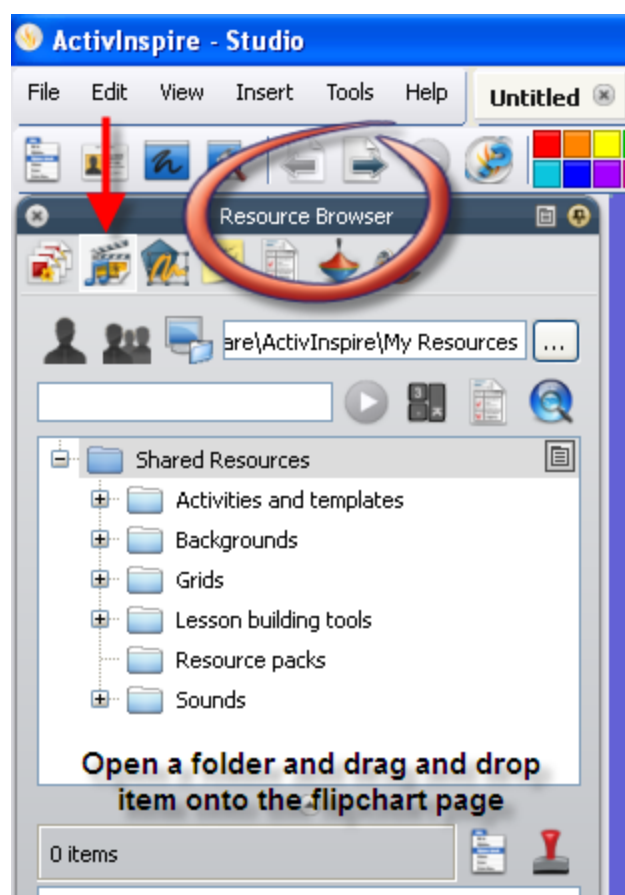
Click Install and wait.



Click Finish.



Open ActivInspire and open the Resource Browser.



The Core Resource Pack should automatically import. If it is not there the first time you look, close ActivInspire and open it again.

Let me know if you have any questions.

For Promethean tech questions please call 1-888-652-2848 option #3.